

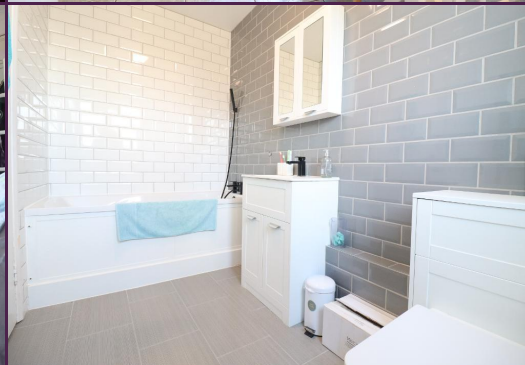
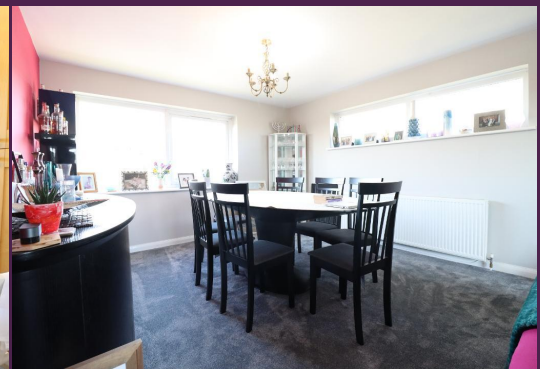


## Kenlor Court, Heather Walk, Edgware

2 Bed Apartment

Council tax band: E Tenure: Share of Freehold

Guide Price **£465,000** STC  
**FOR SALE**



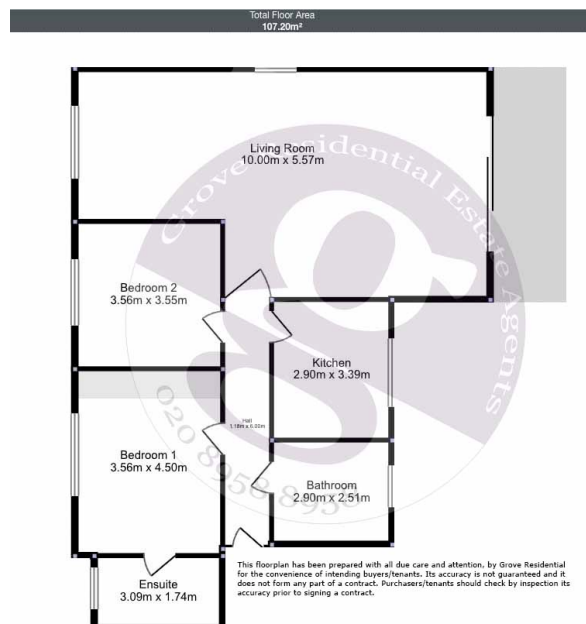
297 Hale Lane  
Edgware  
Middlesex  
HA8 7AX

t: 020 8958 8958  
f: 020 8958 2300  
e: [info@groveresidential.co.uk](mailto:info@groveresidential.co.uk)  
w: [www.groveresidential.co.uk](http://www.groveresidential.co.uk)

Company No: 9632012 VAT Reg. No: 217 0421 50  
Registered Address: 297 Hale Lane, Edgware, Middlesex, HA8 7AX







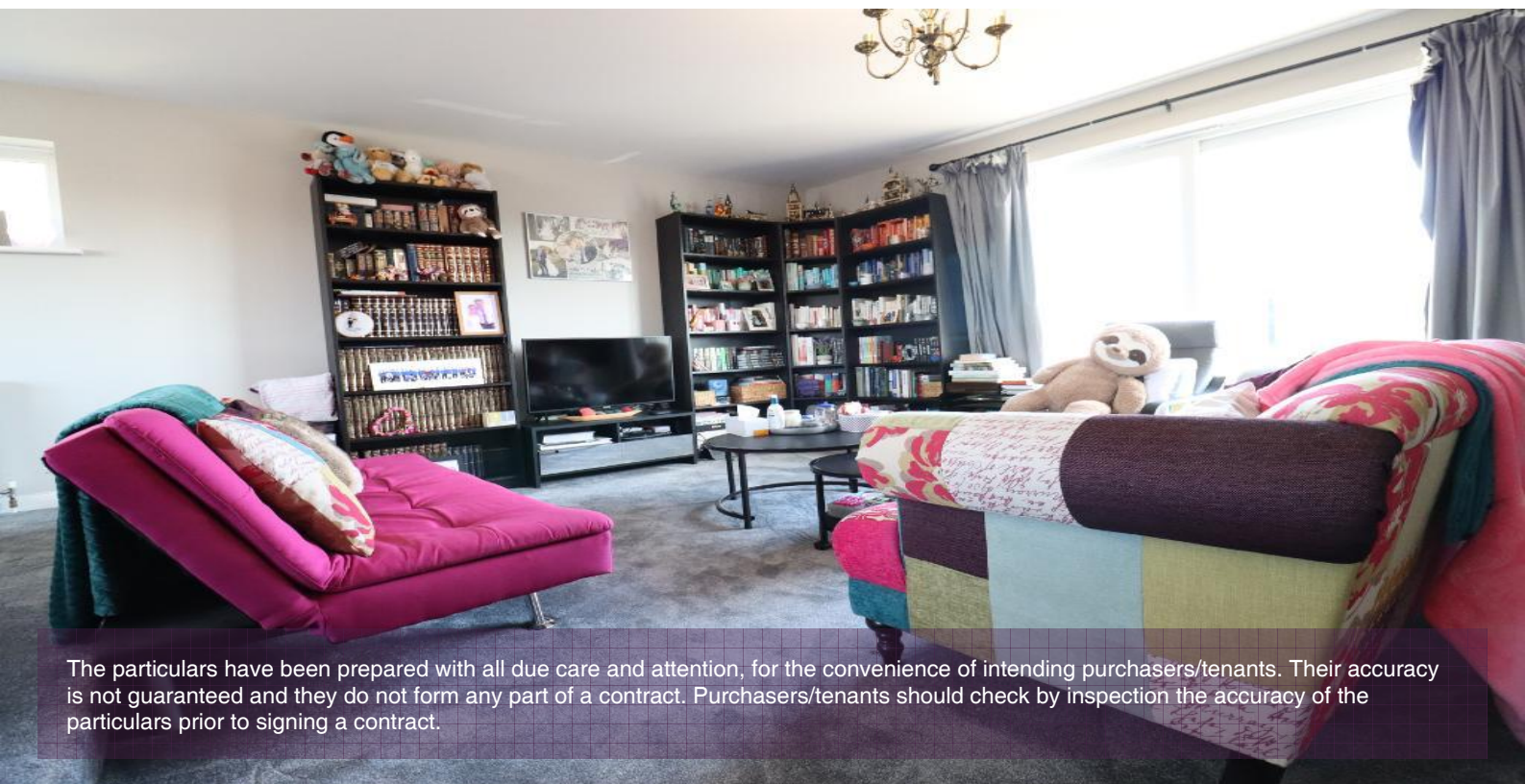
## Key Features

- 2 Bedroom 2nd Floor Apartment
- Spacious L-shape Living/Dining Room
- Separate Eat In Kitchen
- 2 Double Bedrooms
- Shower Room & Ensuite
- Garage En Block

## Summary

A spacious two bedroom two bathroom apartment, on the second floor, situated in this popular block on the corner of Heather Walk. Within moments to Edgware High Street, transport links and within the Eruv. The property boasts a spacious L-shaped living/dining room, separate eat in kitchen and good sized bedrooms. Garage en block. Sha

Score	Energy rating	Current	Potential
92+	A		
81-91	B		
69-80	C		74 C
55-68	D		
39-54	E	54 E	
21-38	F		
1-20	G		



The particulars have been prepared with all due care and attention, for the convenience of intending purchasers/tenants. Their accuracy is not guaranteed and they do not form any part of a contract. Purchasers/tenants should check by inspection the accuracy of the particulars prior to signing a contract.