



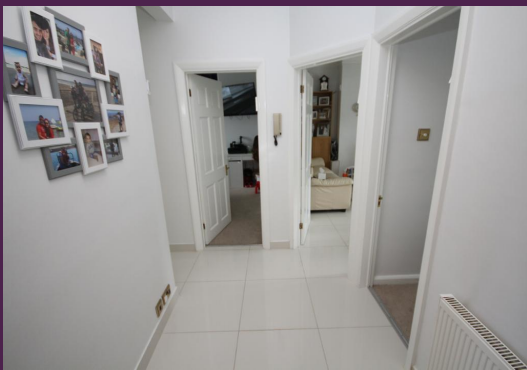
Energy Efficiency Rating			
Score	Energy rating	Current	Potential
92+	A		
81-91	B		
69-80	C	70 C	81 B
55-68	D		
39-54	E		
21-38	F		
1-20	G		

Edgwarebury Court, Edgwarebury Lane, London

£375,000 STC
FOR SALE

2 Bed Apartment

Council tax band: C Tenure: Leasehold





297 Hale Lane t: 020 8958 8958
Edgware f: 020 8958 2300
Middlesex e: info@groveresidential.co.uk
HA8 7AX w: www.groveresidential.co.uk

Company No: 9632012 VAT Reg. No: 217 0421 50
Registered Address: 297 Hale Lane, Edgware, Middlesex, HA8 7AX



naea | propertymark

PROTECTED

arla | propertymark

PROTECTED

The particulars have been prepared with all due care and attention, for the convenience of intending purchasers/tenants. Their accuracy is not guaranteed and they do not form any part of a contract. Purchasers/tenants should check by inspection the accuracy of the particulars prior to signing a contract.

Key Features

- 2 Bedroom First Floor Apartment
- Kitchen
- Long Lease
- Chain Free Sale
- Lounge/Dining Room
- Modern Bathroom

Summary

A spacious 2 bedroom first floor flat located in this central position a stones throw from shops and amenities. The flat boasts a large lounge/dining room, spacious bedrooms and porcelain flooring. CHAIN FREE SALE !

Energy Efficiency Rating			
Score	Energy rating	Current	Potential
92+	A		
81-91	B		
69-80	C		81 B
55-68	D	70 C	
39-54	E		
21-38	F		
1-20	G		

