



Energy Efficiency Rating			
Score	Energy rating	Current	Potential
92+	A		
81-91	B	89 B	89 B
69-80	C		
55-68	D		
39-54	E		
21-38	F		
1-20	G		

Hillgrove House, Edgware

2 Bed Apartment

Council tax band: D Tenure: Leasehold

£545,000 STC
FOR SALE



297 Hale Lane
Edgware
Middlesex
HA8 7AX

t: 020 8958 8958
f: 020 8958 2300
e: info@groveresidential.co.uk
w: www.groveresidential.co.uk

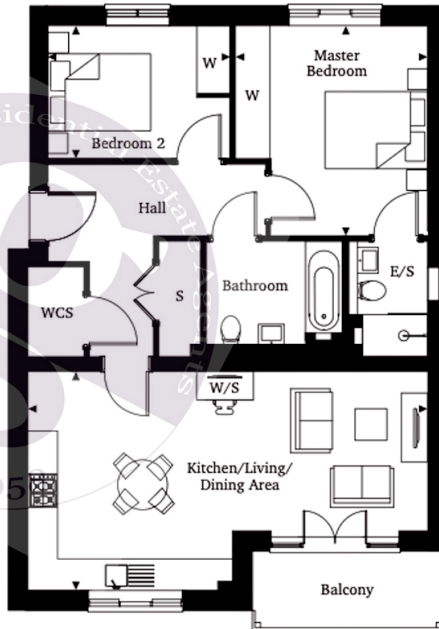
Company No: 9632012 VAT Reg. No: 217 0421 50
Registered Address: 297 Hale Lane, Edgware, Middlesex, HA8 7AX



Hillgrove House, 186a High Street, Stonegrove, Edgware

Total Size of Apartment 813 sq ft / 75.5sqm
Kitchen/Living Area 25'1 x 13'7 / 7.65m x 4.15m
Master Bedroom 13'1 x 12'0 / 3.88m x 3.67m
Bedroom 2 11'4 x 9'9 / 3.46m x 2.42m

This floorplan has been prepared with all due care and attention, by Grove Residential for the convenience of intending buyers/tenants. Its accuracy is not guaranteed and it does not form any part of a contract. Purchasers/tenants should check by inspection its accuracy prior to signing a contract.



Key Features

- 2 Bedroom 2 Bathroom Apartment
- Contemporary Open Plan Kitchen
- Dual Aspect Living Area
- 2 Double Bedrooms
- Low Running Costs EPC: B
- Balcony & Communal Roof Terrace

Summary

A luxury two bedroom two bathroom 2nd floor apartment (with lift access) set in this exclusive development by Shanly Homes, within close proximity to Edgware Station and High Street. Hillgrove House is a collection of 22 one bedroom and two bedroom apartments which have the added benefit of an NHBC 10yr warranty from when they were c

Energy Efficiency Rating			
Score	Energy rating	Current	Potential
92+	A		
81-91	B	89 B	89 B
69-80	C		
55-68	D		
39-54	E		
21-38	F		
1-20	G		



The particulars have been prepared with all due care and attention, for the convenience of intending purchasers/tenants. Their accuracy is not guaranteed and they do not form any part of a contract. Purchasers/tenants should check by inspection the accuracy of the particulars prior to signing a contract.



297 Hale Lane
 Edgware
 Middlesex
 HA8 7AX
 t: 020 8958 8958
 f: 020 8958 2300
 e: info@groveresidential.co.uk
 w: www.groveresidential.co.uk

Company No: 9632012 VAT Reg. No: 217 0421 50
 Registered Address: 297 Hale Lane, Edgware, Middlesex, HA8 7AX

