



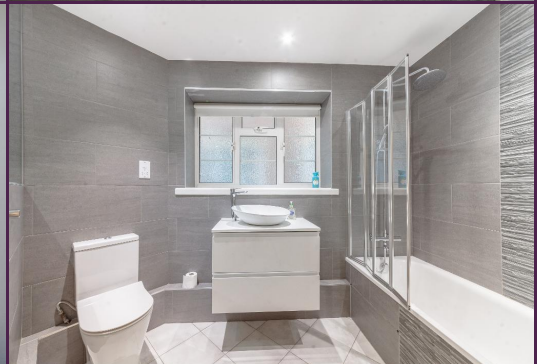
Energy Efficiency Rating			
Score	Energy rating	Current	Potential
92+	A		
81-91	B		
69-80	C		80   C
55-68	D	64   D	
39-54	E		
21-38	F		
1-20	G		

# Courtney House, Mulberry Close, Hendon

**£2,050** per month  
**TO RENT**

3 Bed Apartment

Council tax band: E Tenure: Assured Shorthold Tenancy





297 Hale Lane t: 020 8958 8958  
Edgware f: 020 8958 2300  
Middlesex e: info@groveresidential.co.uk  
HA8 7AX w: www.groveresidential.co.uk

Company No: 9632012 VAT Reg. No: 217 0421 50  
Registered Address: 297 Hale Lane, Edgware, Middlesex, HA8 7AX



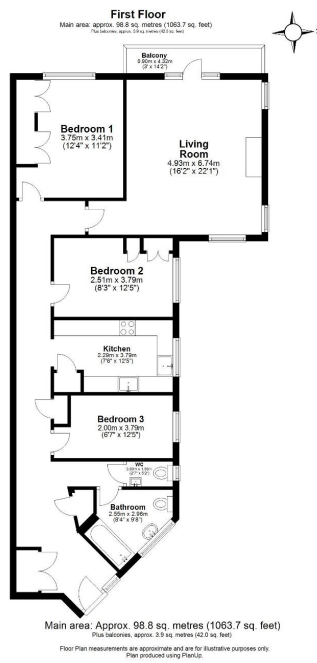
naea | propertymark

PROTECTED

arla | propertymark

PROTECTED

The particulars have been prepared with all due care and attention, for the convenience of intending purchasers/tenants. Their accuracy is not guaranteed and they do not form any part of a contract. Purchasers/tenants should check by inspection the accuracy of the particulars prior to signing a contract.



## Key Features

- 3 Bedroom 1st Floor Apartment
- Lift Access
- Separate Kitchen
- Living/Dining Room
- Fitted Cupboards
- Gas Central Heating & Double Glazing

## Summary

**\*Available Now\*** A highly desirable three-bedroom mansion-style apartment set in this central position on Parsons Street in Hendon, moments away from Brent Street. The property boasts ample living space throughout, a separate contemporary kitchen and balcony space. View now via Grove Residential on 020 8958 8958. This property is a mu

Energy Efficiency Rating			
Score	Energy rating	Current	Potential
92+	A		
81-91	B		
69-80	C		80   C
55-68	D	64   D	
39-54	E		
21-38	F		
1-20	G		

