

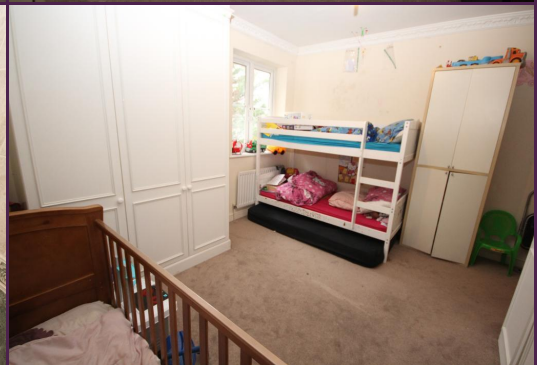


## Cranbourne Court, Hale Lane, Edgware

2 Bed Flat

Council tax band: TBC Tenure: Assured Shorthold Tenancy

**£1,495** per month  
**TO RENT**



297 Hale Lane  
Edgware  
Middlesex  
HA8 7AX

t: 020 8958 8958  
f: 020 8958 2300  
e: [info@groveresidential.co.uk](mailto:info@groveresidential.co.uk)  
w: [www.groveresidential.co.uk](http://www.groveresidential.co.uk)

Company No: 9632012

VAT Reg. No: 217 0421 50

Registered Address: 297 Hale Lane, Edgware, Middlesex, HA8 7AX



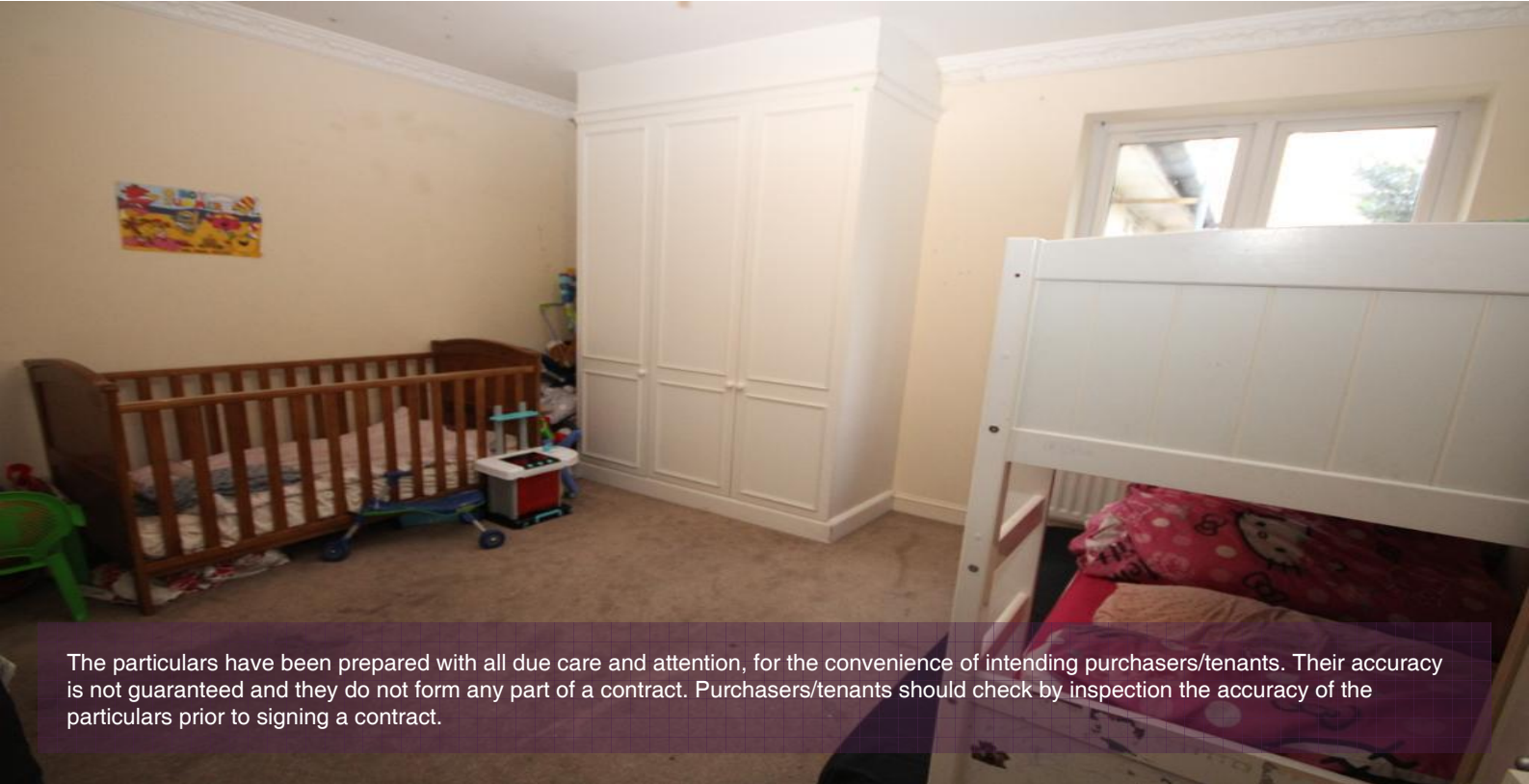


## Key Features

- TWO DOUBLE BEDROOMS
- LARGE RECEPTION ROOM + BALCONY
- TWO DOUBLE BATHROOMS (ONE EN-SUITE)
- COMMUNAL GARDENS
- LIFT

## Summary

An exceptionally large Two Double Bedroom, Two Bathroom (One En-Suite) apartment set on the second (top) floor of this lift serviced block in a sought after location within minutes walk of Edgware Station Road and it's Northern Line tube station.



The particulars have been prepared with all due care and attention, for the convenience of intending purchasers/tenants. Their accuracy is not guaranteed and they do not form any part of a contract. Purchasers/tenants should check by inspection the accuracy of the particulars prior to signing a contract.